

Motoring

Two into one

sponsored
by

■ Vauxhall's new Corsa – it's an automatic and it's a manual – is put through its paces by Richard Hill.

537/13

THE image makers at Vauxhall call it the 'grown up small car'.

Certainly it's bigger and better than its predecessor. The dominant difference, however, sees the introduction of a new concept in transmission.

The 'Easytronic' system combines the advantages of a manual gearbox with that of automatic transmission.

The added value of driving an automatic car become apparent in slow traffic, especially in heavy stop-start congestion.

It's far less stressful both physically and psychologically. Out on the open road, the preference is often for manual control.

The Easytronic system lets the driver switch between automatic and manual transmission with a gentle touch of the gear lever.

In manual mode the gear lever is nudged forwards or backwards to climb or descend through the gears. There is no clutch, so changing gear becomes practically effortless, difficult to adjust to at first, but perfectly easy and straightforward once the action becomes regular.

It is a refreshing evolutionary development, enhanced perhaps by the advantage of being suitable for holders of the basic 'automatic' driving licence. It also offers a possible alternative for drivers with certain disabilities.

Tony Jones, sales manager at Windsor-based AA Clark, is very enthusiastic: "It lives up to the advertising claims as the biggest small car we've ever

It's an automatic and it's a manual! Intrigued by the recent publicity campaign Richard Hill finds out what's really behind the new Vauxhall Corsa.

sold," he says. The biggest change of all is the introduction of the Easytronic gearbox. This is definitely going to catch on with the motoring public."

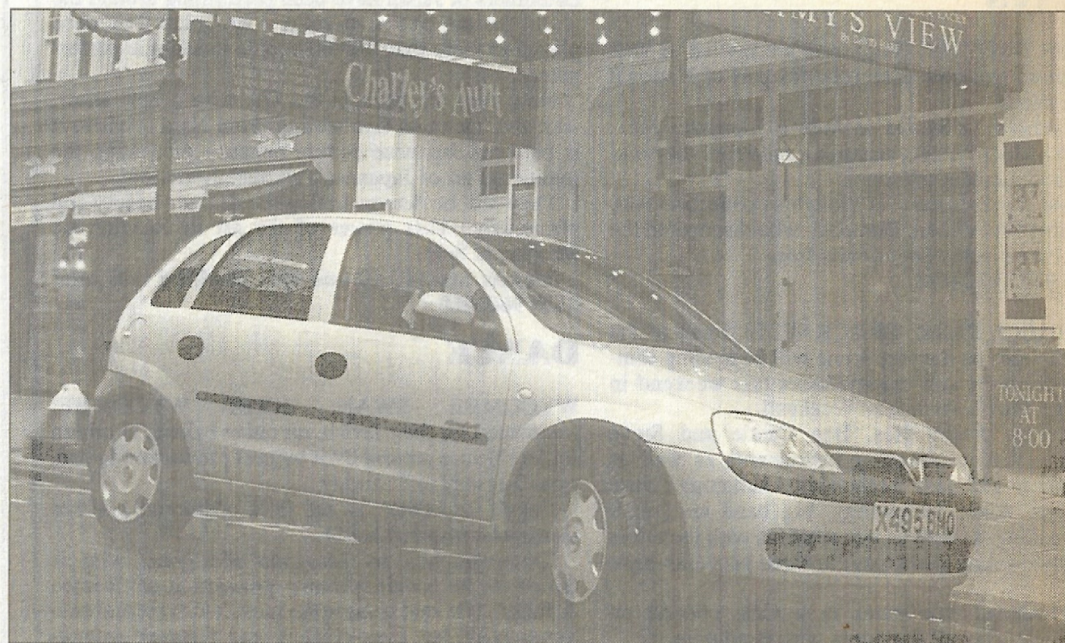
The on-the-road entry price of under £7,000 includes one year's free insurance. Easytronic is available as an option on 1.2i, 16v Corsas for an additional £350. Fuel consumption has been cut by an average of five per cent compared with previous models.

All new Vauxhalls have a three year/60,000-mile warranty and 20,000 mile/one year service intervals.

Insurance rates are very favourable and many of the new Corsas are eligible for road tax concessions because of their low CO2 emissions.

On the road, it handles pleasantly and is very responsive.

In both manual and automatic drive there is an impression of a slight 'dip' during gear change, an



unfamiliar response, but only at first. The layout of the controls is comfortable and convenient and the instrument panel is well designed and easy to read.

The most welcoming feature is the courteous courtesy light. It illuminates the interior as soon as the car is remotely unlocked.

It then politely and respectfully fades down when no longer required. Then it would – it's an automatic and it's a manual!

Further information – Vauxhall:
www.vauxhall.co.uk Tel: 0845 600 1500
AA Clark: www.aaclark.com Tel: 01753 863456